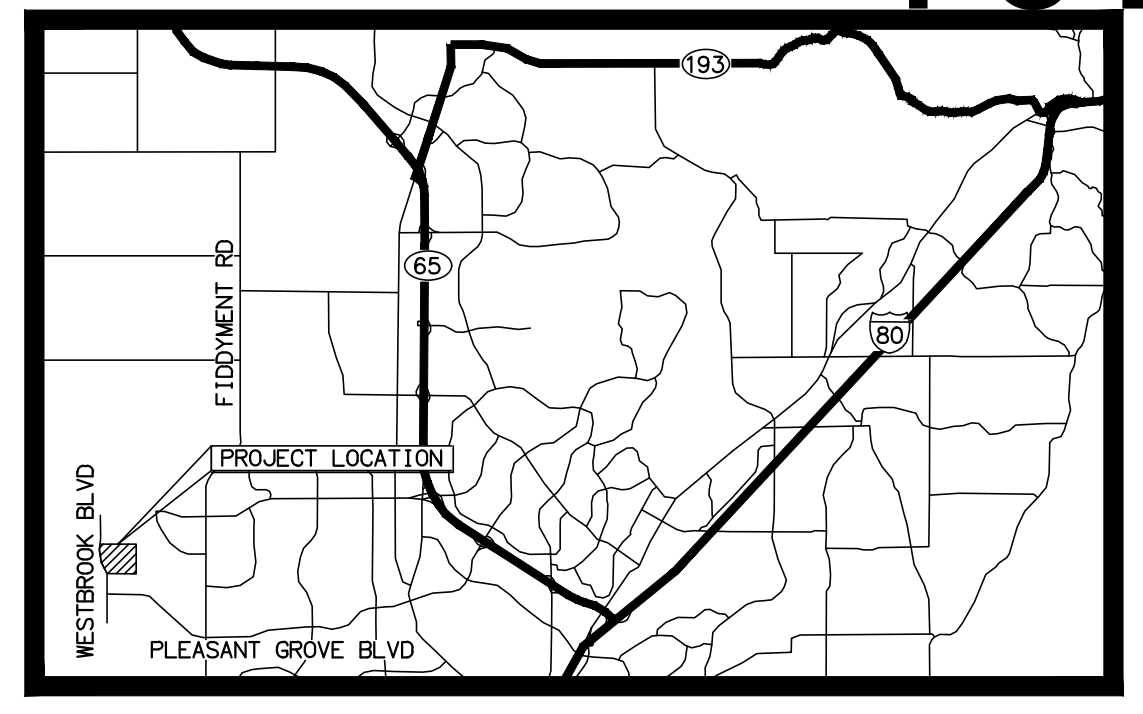


SITE INFORMATION

APN: TBD RAW EARTHWORK
ONSITE AREA: 9.974 ACRE CUT: 10,177 CU. YDS.
DISTURBED AREA: 9.974 ACRE FILL: 10,177 CU. YDS.
SOIL GROUP: D NET: 0 (BALANCED SITE)
PROP. % IMPERVIOUS: 84%
EXIST. % IMPERVIOUS: 2%
TREE REMOVAL: 0
FLOOD PLAIN DATA REFERENCED FROM
FEMA PANEL: 06061C0920H
DATED: NOVEMBER 2, 2018
FLOOD HAZARD ZONE: X

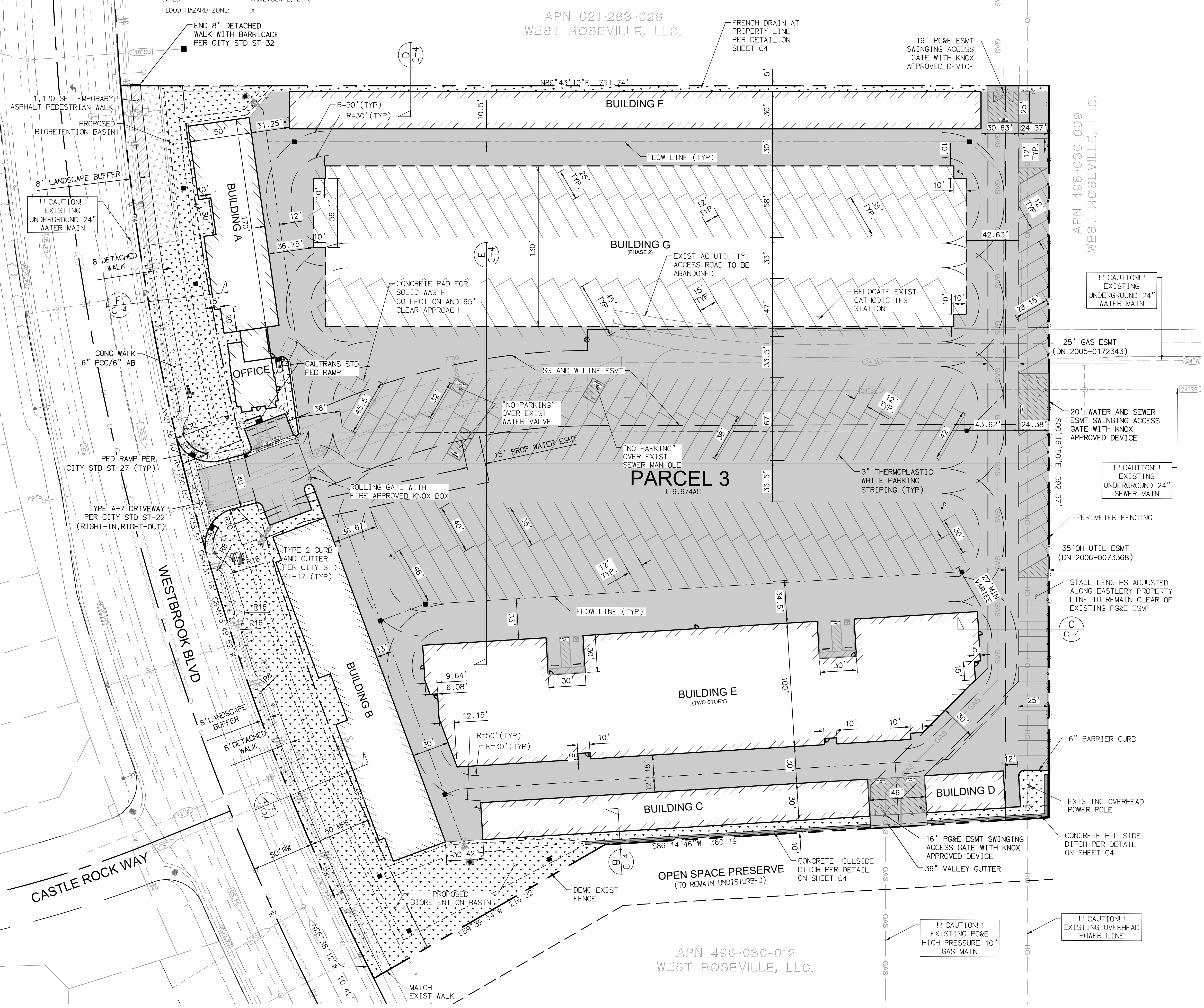
CONCEPTUAL IMPROVEMENT PLANS
WESTBROOK STORAGE
CITY OF ROSEVILLE

BENCHMARK:
CITY OF ROSEVILLE #72 ELEV. 114.96
3 1/2" BRASS DISC STAMPED LS6046, DEC.
1995, TOP OF CURB AT CATCH BASIN, NORTH
SIDE OF DEL WEBB BLVD. AT 50' EAST OF
FIDYMENT ROAD.
PROJECT DATUM NGVD29



VICINITY MAP
NO SCALE

SHEET C-1
CONCEPTUAL IMPROVEMENT PLANS FOR
2300 WESTBROOK BLVD,
ROSEVILLE, CA 95747
SITE LAYOUT
CITY OF ROSEVILLE
PRELIMINARY - NOT FOR CONSTRUCTION



UTILITY AND AGENCY INDEX

Table listing utility providers and agency contacts such as U.S.A., Telephone, Gas, Electric, Fire, Water, Sewer, Cable TV, Storm Drain, Consolidated Communications, Wayne Anderson, Pacific Gas & Electric, Susan Smith, Roseville Electric Dept., Jeff Wilcox, Roseville Fire Department, Patrick Chew, City of Roseville, Sean Bigley, Comcast Cable, Ken Glotzbach, Development Services, Mark Duby, Engineering Division, and Engineering.

PROJECT CONTACT INFORMATION

LANDSCAPE ARCHITECT: VALLI ARCHITECTURAL GROUP
CIVIL ENGINEER: B2 ENGINEERING, INC.
ARCHITECT: VALLI ARCHITECTURAL GROUP
GEOTECHNICAL ENGINEER: YOUNGDAL CONSULTING GROUP, INC.

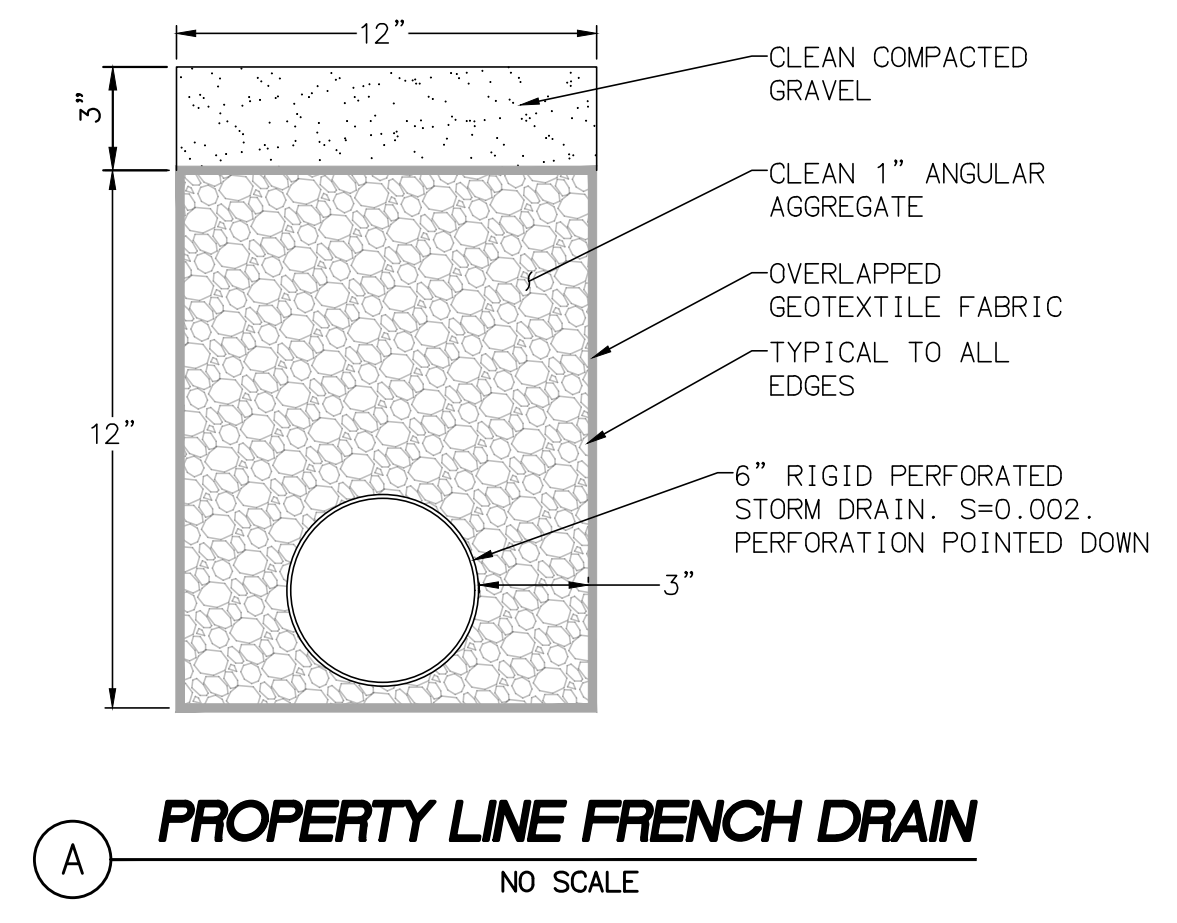
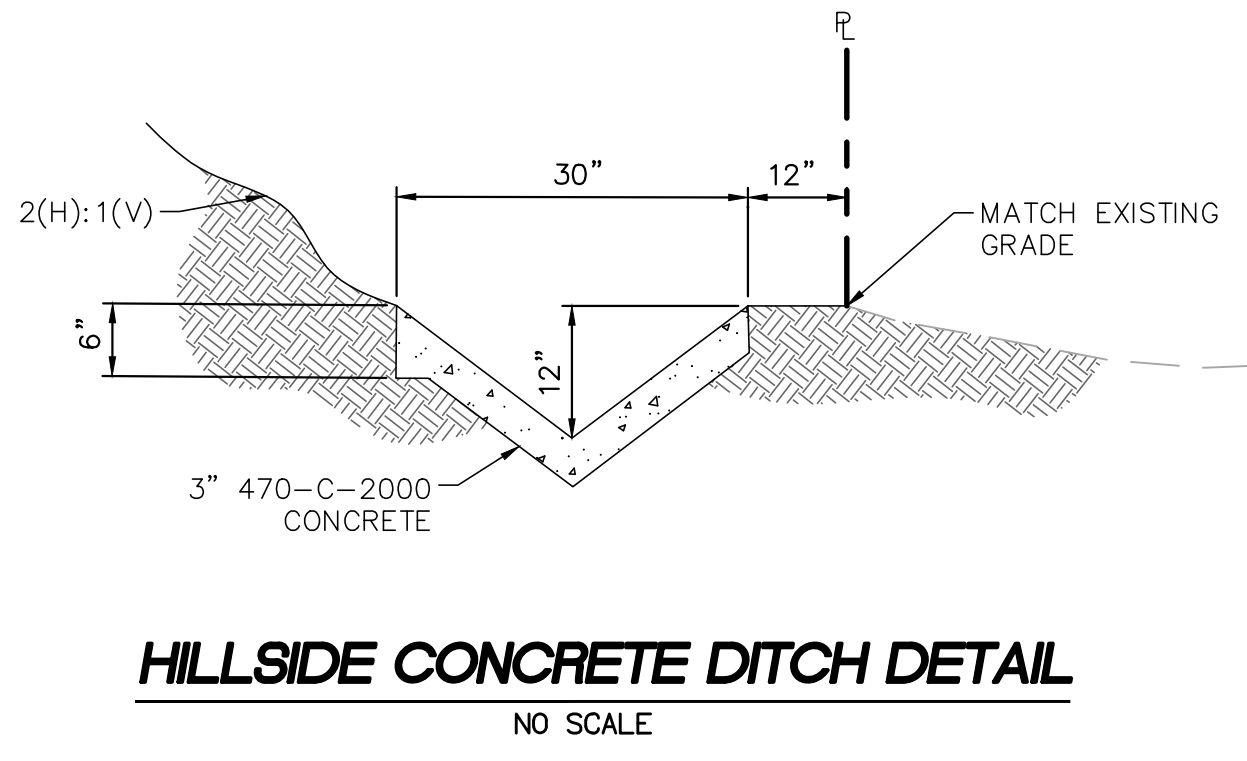
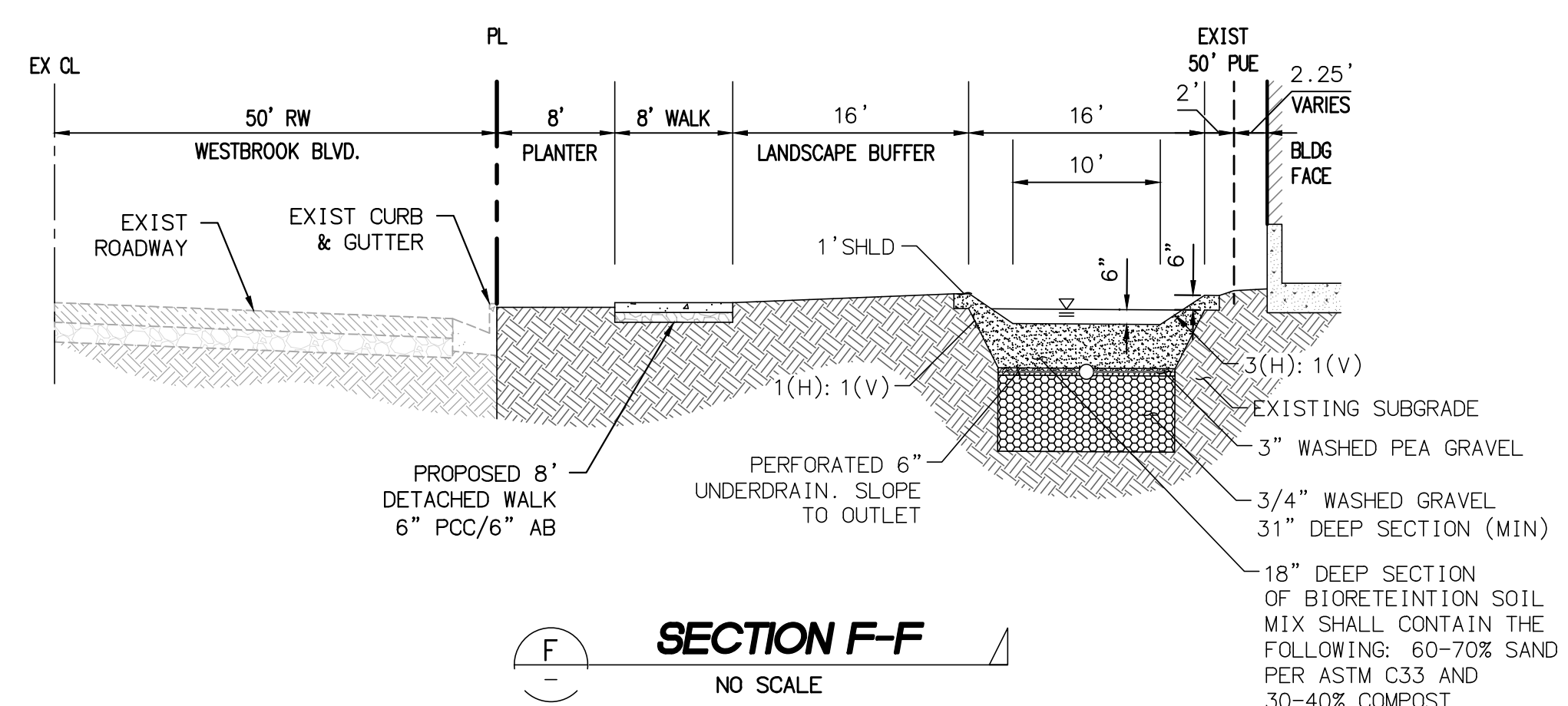
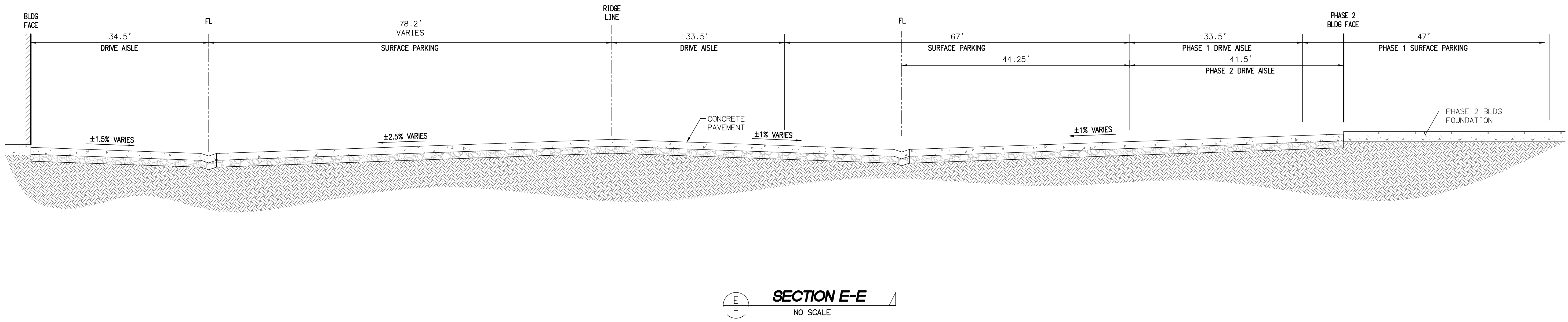
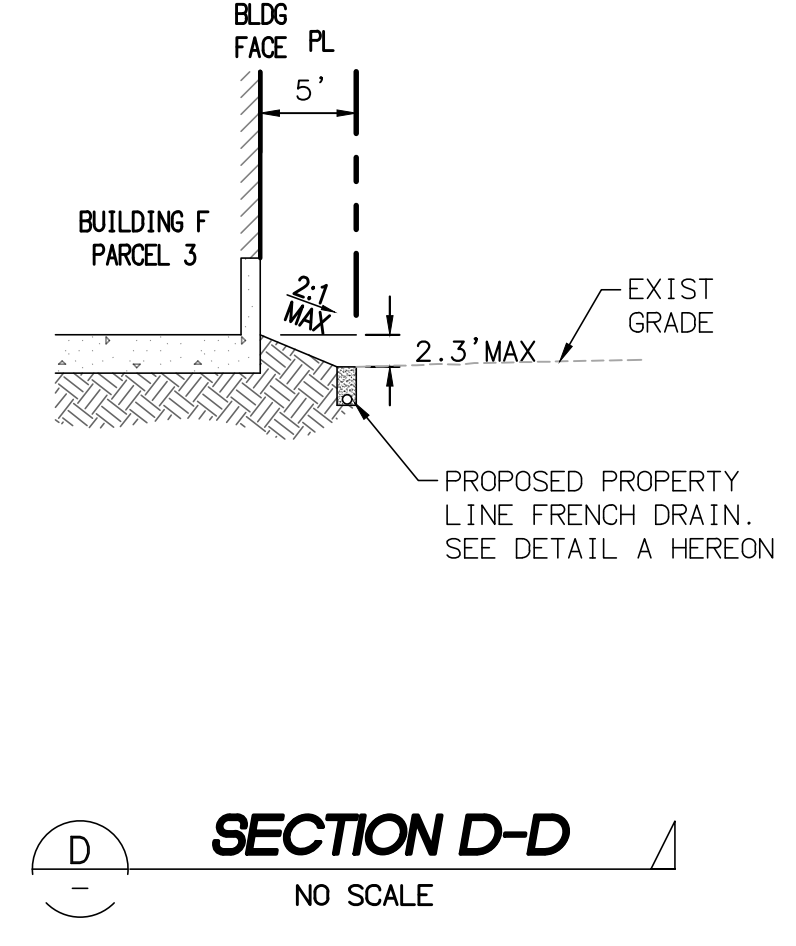
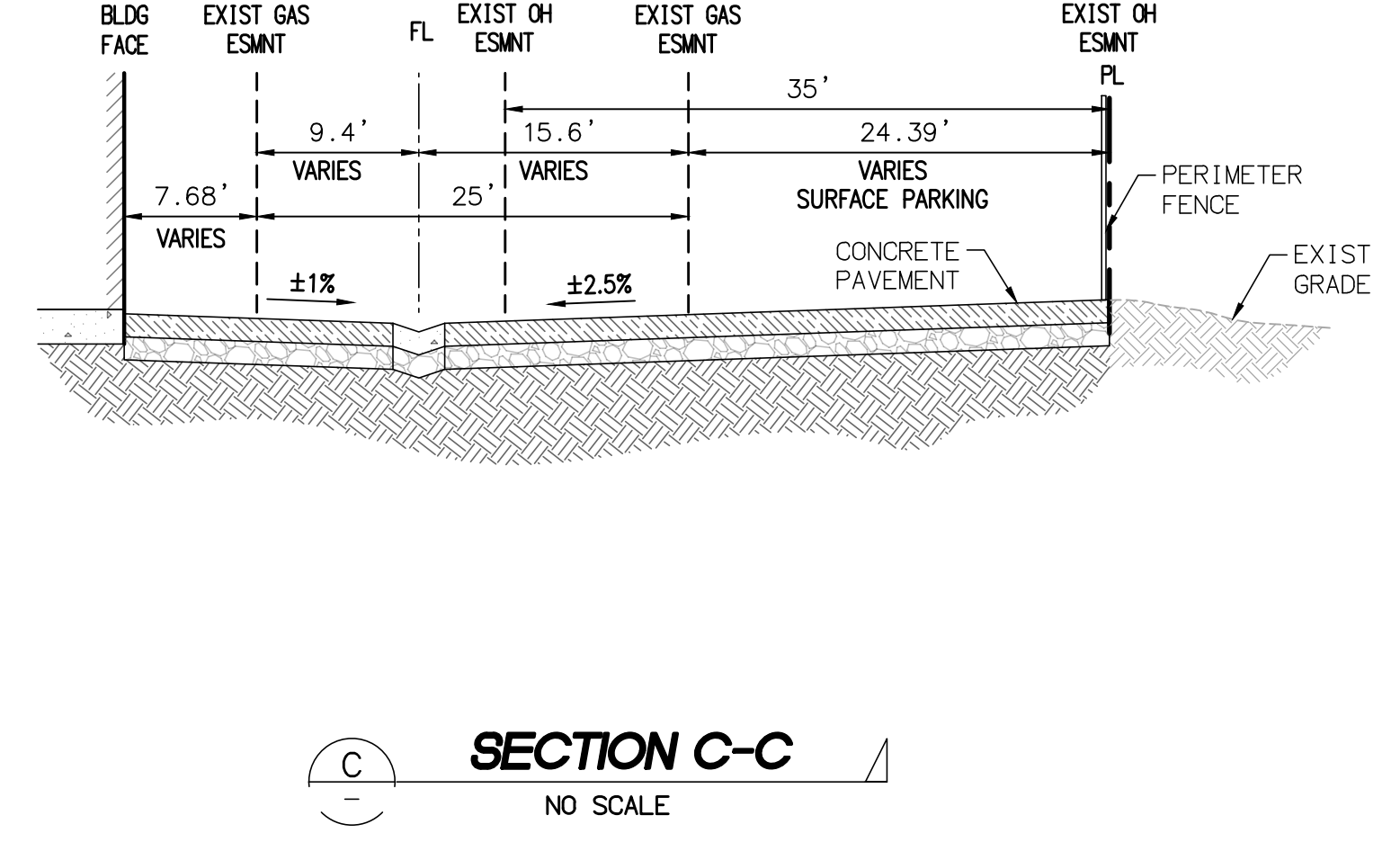
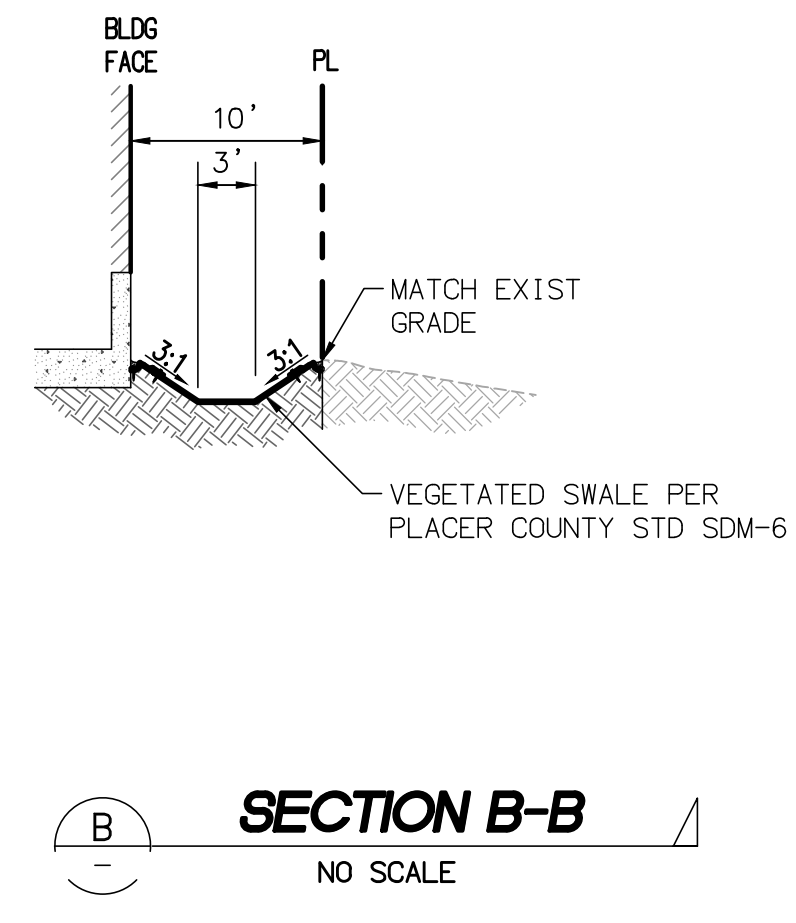
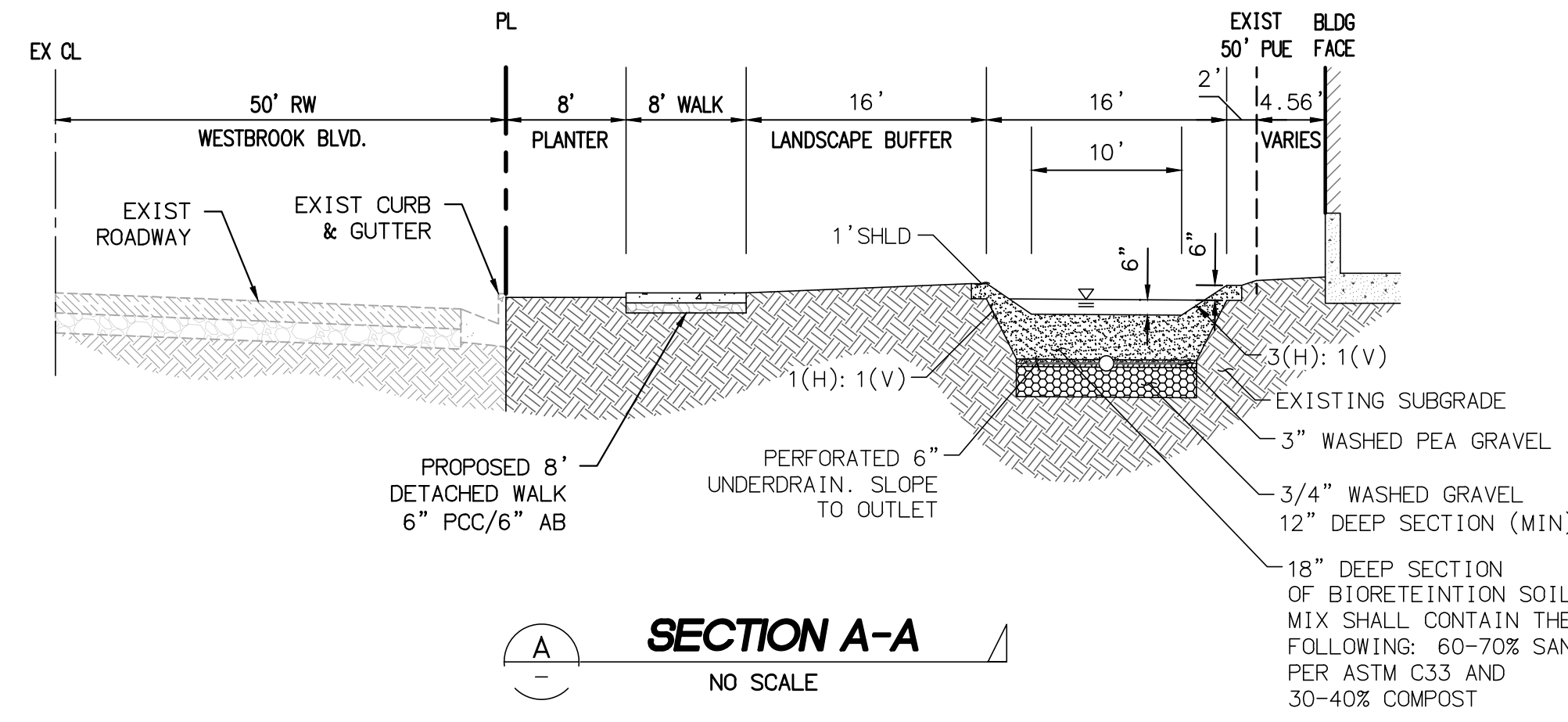
LEGEND

Legend table with columns for Existing Symbol, Description, Proposed Symbol, and Description. Includes symbols for elevation, curb & gutter, property line, easement, contours, street light, storm drain, sanitary sewer, domestic water, reclaimed water, joint trench, fence, remove or demolish, landscaping, traffic rated inlet, power pole, storm drain manhole, sanitary sewer manhole, fire hydrant, gate valve, butterfly valve, blowoff with size, double check detector assembly, reduced pressure principle assembly, cathodic protection test station, cathodic test station, storm drain manhole, sewer manhole, drop inlet, fire hydrant, gate valve, butterfly valve, blowoff assembly, double check detector assembly, reduced pressure principle assembly, service lateral, fire department connection, fitting, future connection, post indicator valve, concrete pavement, landscape, future impacted landscape, 3" asphalt pavement, future impacted pedestrian walk, concrete walk, concrete gutter/driveway section.

FIRE ACCESS ROUTE DETAIL



Plotfile: Apr 26, 2022 - 4:07pm by: britb
Drawn: Name: C:\Users\britb\AppData\Local\Temp\AspPublish_624310_025_Ext_01_Site Layout.dwg



Plotted: Apr. 26, 2022 -- 4:07pm by: britb
 Drawn: Name: C:\Users\britb\OneDrive\Documents\Projects\10.025\DWG\MP\EXHIBIT_10.025_EXH_04_SECTIONS.dwg
 Project: 10.025\DWG\MP\EXHIBIT_10.025_EXH_04_SECTIONS.dwg